



Good morning, Aeries!

State Testing – Accommodations, State ID Cards Report



.....



Speaking today:



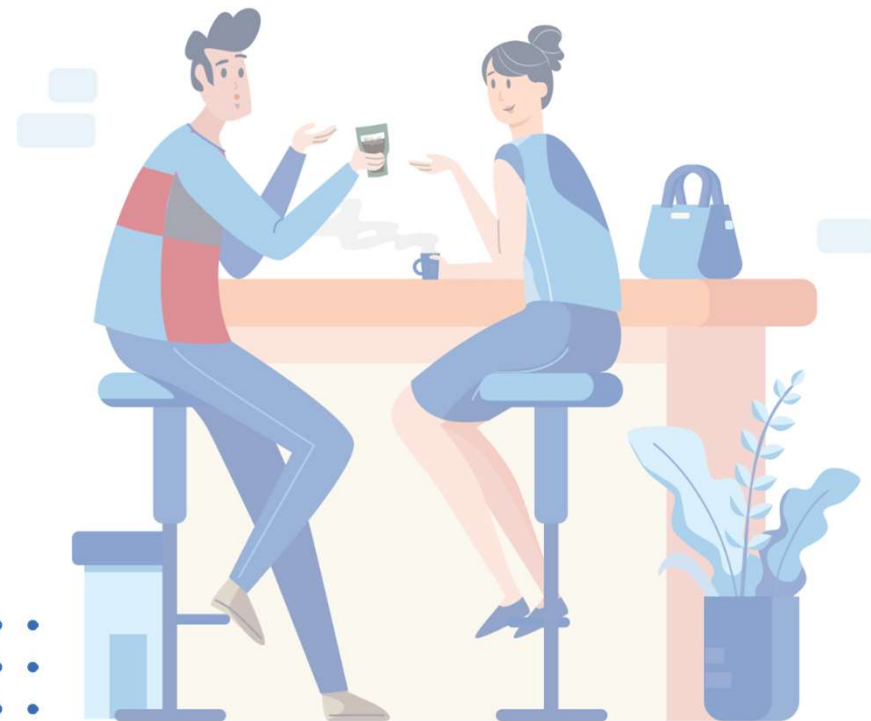
Jaime Perez | Aeries Trainer

jaime@aeries.com



Leeni Mitchell | Aeries Trainer

leeni@aeries.com



Good morning, Aeries!

We will be discussing features in Aeries that assist districts to prepare for California state testing. Features discussed will be CAASPP Student Test Settings (Accommodations) and the Print Smart Balanced Cards (SBAC) - CAASPP report.

Need To Know

Review Security Permissions

STS Table

Read – View Test Settings

Read, Insert, Update, Delete – Add, update and delete records

Administer – Allows non-Admin users to create the State Testing Export Files

State Testing Export Files

Download the current Excel Template from testing vendor

ELPAC - <https://www.elpac.org/resources/accessibility-resources/>

CAASPP - <https://www.caaspp.org/ta-resources/toms/index.html>

Nice To Know

CA Assessment Accessibility Resources Matrix

<https://www.cde.ca.gov/ta/tg/ca/accessibilityresources.asp>

Types of Student Accessibility Resources

- **Universal tools** are available to *all* students on the basis of student preference and selection.
- **Designated supports** are available to *all* students when determined for use by an educator or team of educators (with parent/guardian and student input, as appropriate) or specified in the student's individualized education program (IEP) or Section 504 plan.
- **Accommodations** must be permitted to all eligible students taking CAASPP and ELPAC tests if specified in the student's IEP or Section 504 plan.
- **Unlisted resources** are not universal tools, designated supports, or accommodations. Unlisted resources shall be made available if specified in the eligible student's IEP or Section 504 plan and only with approval from the California Department of Education (CDE). See the [Unlisted Resources](#) web page for more information.

Test Settings

Active Test Settings | Test Settings List (all)

Show Settings For: ☒ CAASPP ☐ ELPAC

i This form only shows ACTIVE Test Settings. The Start Date is on/before today and there is no End Date or the End Date is in the future.

Change

Embedded Accommodations

Non-Embedded Accommodations

Embedded Designated Supports

Non-Embedded Designated Supports

Condition Codes (Medical Emergency or Parent/Guardian Consent)

Test Assignment Settings

Embedded Accommodations

- ☐ American Sign Language (N/A for CAA) [TDS_ASLL]
- ☐ Closed Captioning (ELA) [TDS_ClosedCap]
- ☐ Braille (N/A for CAA) [ENU-Braille]
- ☐ Braille (Science) [ENU-Braille]
- ☐ Braille (Spanish) [ESN-Braille]
- ☐ Text-To-Speech Passages (ELA) [TDS_TTS_Stim]
- ☐ Text-To-Speech Passages (Spanish) [TDS_TTS_Stim]
- ☐ Audio Transcript [TDS_AudioScript]
- ☐ Speech-to-Text (ELA, Math, Science) [TDS_Dictation_1]

Non-Embedded Accommodations

Print on Demand:
Only for reference, cannot be activated in TOMS. Contact vendor.

- ☐ Abacus (Math, Science) [NEA_Abacus]
- ☐ Alternate Response Options [NEA_AR]
- ☐ Calculator (Math) [NEA_Calc]
- ☐ Multiplication Table (Math) [NEA_MT]
- ☐ Read Aloud Passages (ELA) [NEA_RA_Stimuli]
- ☐ Scribe (Writing) [NEA_SC_WritItems]
- ☐ Speech-to-Text (ELA, Math, Science) [NEA_STT]
- ☐ Additional Instruct Supports and Resources for Alt Assessment (CAA) [NEA_AddAltRSC]
- ☐ 100s Number Table (Math) [NEA_NumTbl]
- ☐ Word Prediction [NEA_WordPred]
- ☐ Braille (Paper) [NEA_Braille]
- ☐ Large-print Special Form (Paper) [NEA_LP]

State Testing Export Files

State Testing Export Files

Test Settings Export Options

i Select Test Settings File Type to Export

- ☒ CAASPP Student Test Settings (Accommodations) (Template version 2021-22)
- ☐ CAASPP Student Test Assignment (Template version 2021-22)
- ☐ CAASPP Student Condition Codes (Template version 2021-22)
- ☐ ELPAC Student Test Settings (Accommodations) (Template version 2022-23)
- ☐ ELPAC Student Test Assignment (Template version 2022-23)

i Select Additional Options

Include active settings with a start date on or before this date:

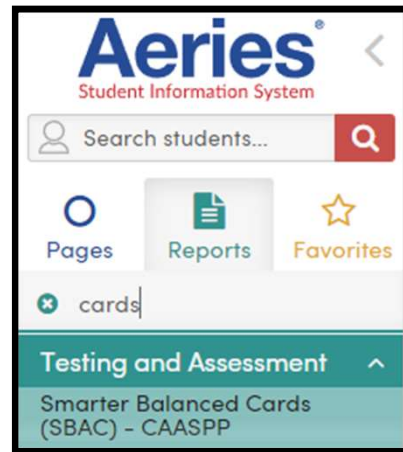
Skip records: ☐ Include Inactive Students ☐ Limit to Special Ed ☐ Limit to English Learners

After the extract file is created, the data in the file must be copied into the template provided by CAASPP or ELPAC. Please refer to the documentation in the Help link for more information.

Download File

On the **State Testing Export Files** screen enter a date in the **Include active settings with a start date on or before this date** field. This date will be used to determine if Special Ed students are enrolled in the Special Ed program during the test administration and if Spanish speaking Limited English students have been enrolled in a US School for less than one year.

State ID Cards

A screenshot of the 'Print Smarter Balanced Cards (SBAC) - CAASPP Report Options' form. The form has a teal header with the title. Below the header, there are two dropdown menus: 'Report Format' set to 'PDF' and 'Report Delivery' set to 'None'. Below these is a section titled 'ID to Print' with a dropdown menu set to 'None'. There are two checkboxes: 'Print Last Name?' and 'Print Legal Name Disclaimer?'. Below the second checkbox is a text block: 'Students will have a reminder on their card that they need to use their legal name when signing into CAASPP'. Below this is a 'Sort by...' section with a dropdown menu set to 'First Name'. At the bottom, there is a checkbox for 'Include Inactive Students?' and a 'Run Report' button.

- The report will print out 10 cards per page, each card is 3.5" x 2" high.
- There are a variety of sort options and several additional identification options available to print on the cards.



Thanks for joining us!

Where to Go [Aeries Support – Test Settings and State Test Export Files](#)

Watch for more upcoming webinars!

Note:
All Webinars
start @ 9am
PST/11am CST
and are 45
minutes.

Register

- January 26 - Attendance Dashboard
- January 31 – CALPADS Fall 2 – Q & A
- February 1 – Physical Fitness Testing
- February 2 – Advanced Query
- February 7 – Elementary w/MST
- February 8 – Intervention Management
- February 9 – Creating Pre-Enrolled Students
- February 14 – Contact Management
- February 15 – 504 Management
- February 16 – Summer School
- February 21 – Course Requests
- February 23 – Course Requests Packets



We value your feedback!

Please take a few minutes to complete our survey and let us know how we can better serve you in the future! Have a great rest of your day.

[Good-Morning-Aeries-Survey](#)